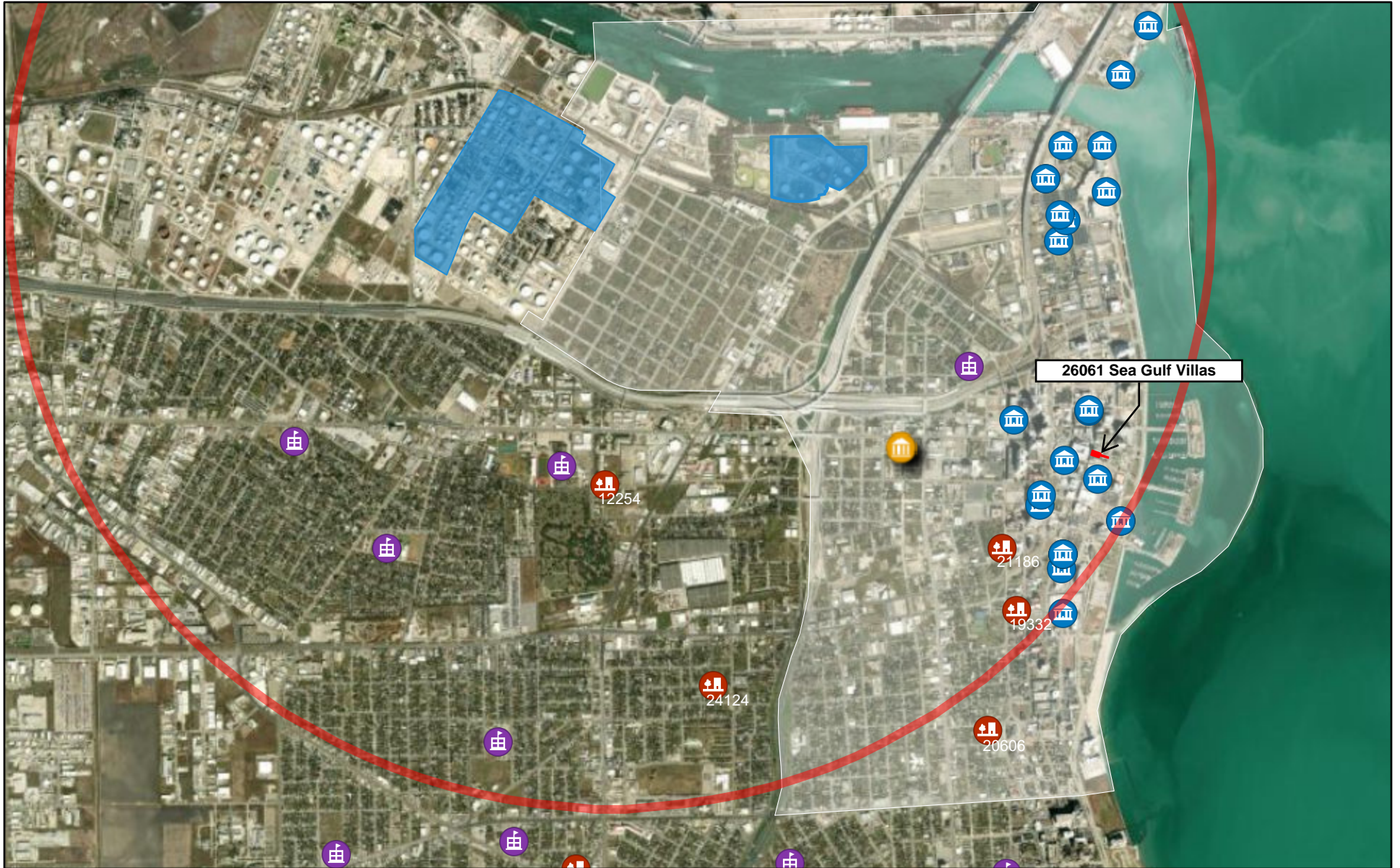


CITGO Petroleum Corporation 2-Mile Radius



■ 26061 Sea Gulf Villas

■ CITGO Petroleum Corporation (2 Tax Parcels Shown)

■ Flint Hills Resources (3 Tax Parcels Shown)

■ Magellan Terminals Holdings (1 Tax Parcel Shown)

🏠 TDHCA Property Inventory

🎓 Public School

🏛️ Point of Interest (Museums, etc.)

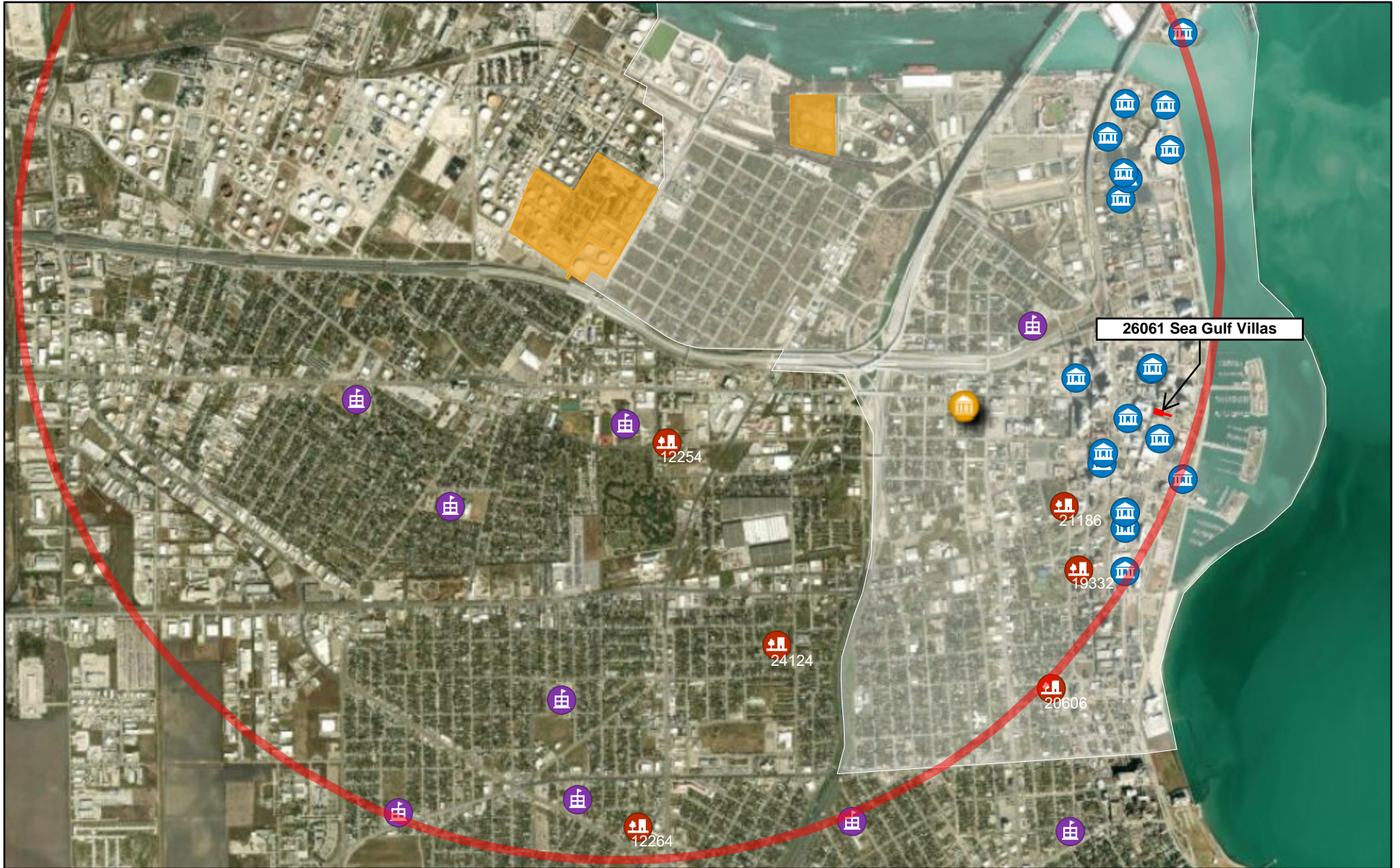
🏛️ City Hall



NCES EDGE, Vantor

Flint Hills Resources

2-Mile Radius



■ 26061 Sea Gulf Villas

■ CITGO Petroleum Corporation (2 Tax Parcels Shown)

■ Flint Hills Resources (3 Tax Parcels Shown)

■ Magellan Terminals Holdings (1 Tax Parcel Shown)

🏠 TDHCA Property Inventory

🏫 Public School

🏛️ Point of Interest (Museums, etc.)

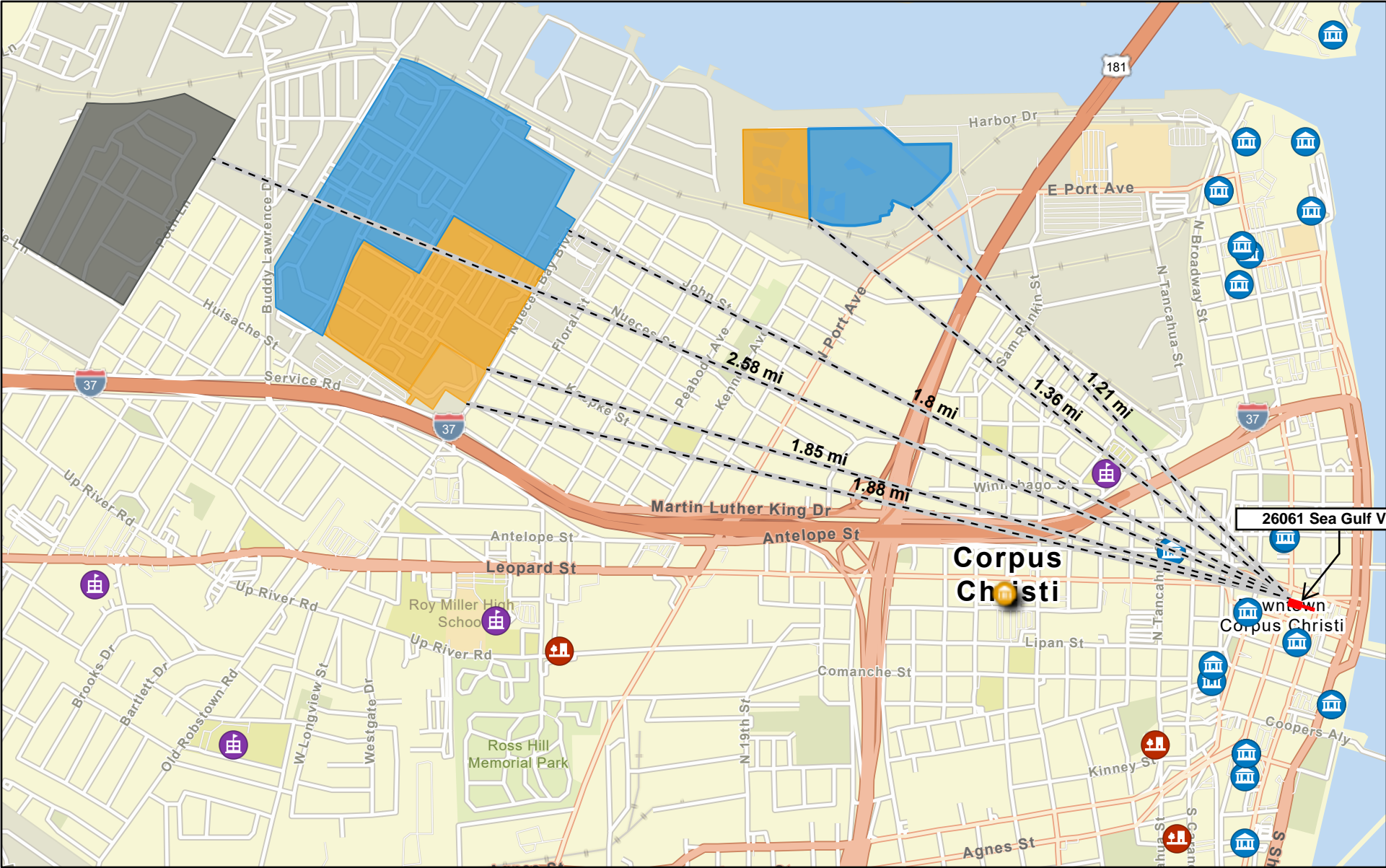
🏛️ City Hall



NCES EDGE, Vantor

26061 Sea Gulf Villas

Distance to Refineries



■ 26061 Sea Gulf Villas

■ CITGO Petroleum Corporation (2 Tax Parcels Shown)

■ Flint Hills Resources (3 Tax Parcels Shown)

■ Magellan Terminals Holdings (1 Tax Parcel Shown)

🏠 TDHCA Property Inventory

🎓 Public School

🏛️ Point of Interest (Museums, etc.)

🏛️ City Hall



NCES EDGE, Sources: Esri, TomTom, Garmin, FAO, NOAA, USGS, (c) OpenStreetMap contributors, and the GIS User Community